

Series M: UVC Mobile Air Purifier

Operating Instructions



EPA EST. 96318-WA-1

CONGRATULATIONS

You’ve purchased a Series M Mobile Air Purifier that will help clean the air in your facility.

Please read these Operating Instructions thoroughly before operating the product. If you have any questions, contact our Customer Experience team at 425.595.6330, or support@safeology.com

APPLICATION

These instructions apply only to Mobile Air Purifiers manufactured by Electric Mirror and distributed under the brand name Safeology. The product may be referred to as a “purifier” throughout these instructions.

TABLE OF CONTENTS

I. REVIEW IMPORTANT SAFETY INSTRUCTIONS.....	2
II. UNPACK YOUR PURIFIER.....	4
III. INSTALL THE LAMPS AND CONNECT TO POWER.....	5
IV. CHANGING THE FILTERS	7
V. CARE AND CLEANING INSTRUCTIONS	10



I. REVIEW AND FOLLOW IMPORTANT SAFETY INSTRUCTIONS



A. Read first.

1. READ AND FOLLOW ALL SAFETY INSTRUCTIONS
2. WARNING: RISK OF ELECTRICAL SHOCK
3. ALWAYS USE A GROUNDED OUTLET
4. SAVE THESE INSTRUCTIONS

B. Take caution: UVC radiation poses a potential hazard.

1. Never look directly at lamp while on, as UVC radiation can cause severe eye and skin damage.
2. Always turn purifier off before lamp replacement.
3. When replacing lamps, replace them only with the lamps for which the equipment is marked and intended.

C. Follow important safeguards.

1. This equipment is designed for use with germicidal UVC radiation sources and must be operated in compliance with these Instructions to prevent risk of personal injury from UVC radiation.
2. Turn off all power before servicing.
3. Maintenance and servicing of this UVC equipment must be performed by authorized personnel.
4. The use of accessory equipment not recommended by the manufacturer may cause an unsafe condition.
5. Do not use this equipment for other than intended use.

D. Read operating instructions prior to operating the purifier.

1. Operate the purifier according to these instructions.
2. Failure to follow these instructions voids the warranty.

E. Electrician is not required.

1. The purifier comes with a 120V type B Grounded Plug and plugs into standard NEMA 5-15. outlet. Purifier does not require special electrical connections.
2. Do not place within 10' of copiers and printers.
3. Purifier is not compatible with GFCI circuits.

F. Mercury lamp disposal and clean up.

1. If a lamp breaks, follow instructions found here: <https://www.epa.gov/cfl/cleaning-broken-cfl>
2. See the following website for disposal information: <https://www.epa.gov/cfl/recycling-and-disposal-cfls-and-other-bulbs-contain-mercury#whererecycle>

ATTENTION RISQUE DE RAYONNEMENT UVC

CONSIGNES DE SÉCURITÉ IMPORTANTES

1. LISEZ ET SUIVEZ TOUTES LES CONSIGNES DE SÉCURITÉ
2. AVERTISSEMENT: RISQUE DE CHOC ÉLECTRIQUE
3. UTILISEZ TOUJOURS UNE PRISE MISE À LA TERRE
4. COUPEZ L'ALIMENTATION AU DISJONCTEUR AVANT L'INSTALLATION OU L'ENTRETIEN
5. CONSERVEZ CES INSTRUCTIONS

GARANTIES IMPORTANTES

Lors de l'utilisation d'équipements électriques, des précautions de sécurité de base doivent toujours être suivies, notamment les suivantes:

LISEZ ET SUIVEZ TOUTES LES CONSIGNES DE SÉCURITÉ

1. Cet équipement est conçu pour être utilisé avec des sources de rayonnement UV germicides et doit être utilisé conformément à ces instructions pour éviter tout risque de blessure par rayonnement UV.
2. La maintenance et l'entretien de cet équipement générateur d'UV doivent être effectués par du personnel autorisé. Toujours débrancher de l'alimentation avant l'entretien
3. Lors du remplacement des lampes, remplacez-les uniquement par les lampes pour lesquelles l'équipement est marqué et conçu.
4. L'utilisation d'équipements accessoires non recommandés par le fabricant peut entraîner une situation dangereuse.
5. N'utilisez pas cet équipement à d'autres fins que celles pour lesquelles il a été conçu.

CONSERVEZ CES INSTRUCTIONS

Le rayonnement UVC peut provoquer de graves lésions oculaires et cutanées. Ne regardez jamais directement la lampe lorsqu'elle est allumée. Éteignez toujours le produit avant de remplacer la lampe. L'appareil doit être installé et utilisé en stricte conformité avec ces instructions. Appareil fonctionnant selon les directives du fabricant.

Series M: UVC Mobile Air Purifier

Operating Instructions

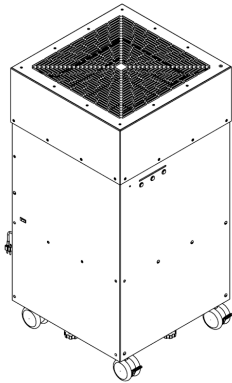


II. UNPACK YOUR PURIFIER

A. Verify the contents.

1. Unpack the box, identify, and verify all contents prior to installation. In general, your purifier will include the following:

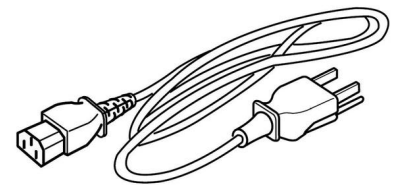
Mobile Air Purifier



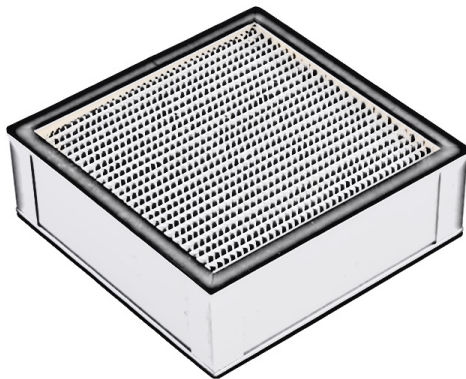
UVC Lamps (Pre-Installed)



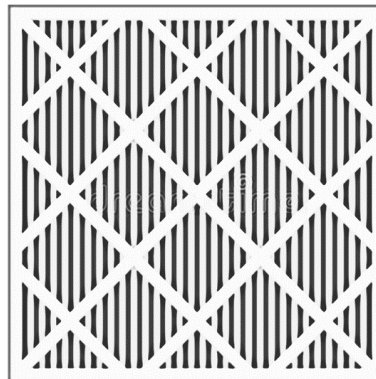
Power Cord



HEPA Filter (Pre-Installed)



Carbon PreFilter (Pre-Installed)



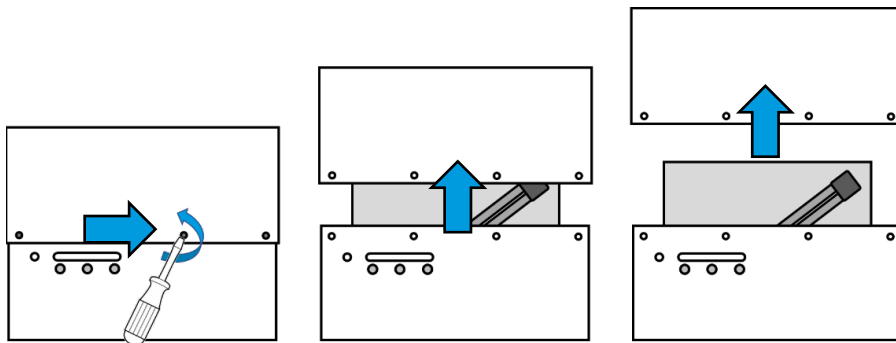
III. INSTALL THE LAMPS AND CONNECT TO POWER

A. Turn the power off.

1. Be sure there is no power to the purifier.
 - a. Unplug the power cord from the wall and turn the master power switch to off.
 - b. Check the power indicator lights (no lights should be visible).

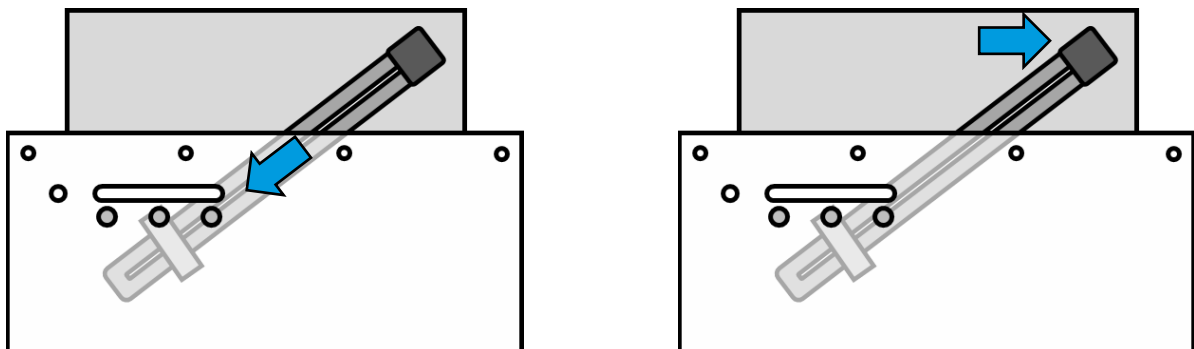
B. Remove the purifier lid.

1. Use a flathead screwdriver to remove the 16 screws around the upper portion of the purifier.
2. Note the original orientation of the purifier cover. The cover must be reinstalled in the same orientation.



C. Install the lamps.

1. Lower the u-shaped end of the lamp into the space between the inner and outer walls and insert the lamp end into the clip mounted on the inside.
2. Push the end with the pins down into the socket near the top of the inner wall until you hear/feel it click into place.
3. Repeat for the other lamp.
4. When changing the lamps, remove them by pushing the red button on the lamp holder and lifting the end of the lamp out of the socket and then withdrawing the end from the clip.



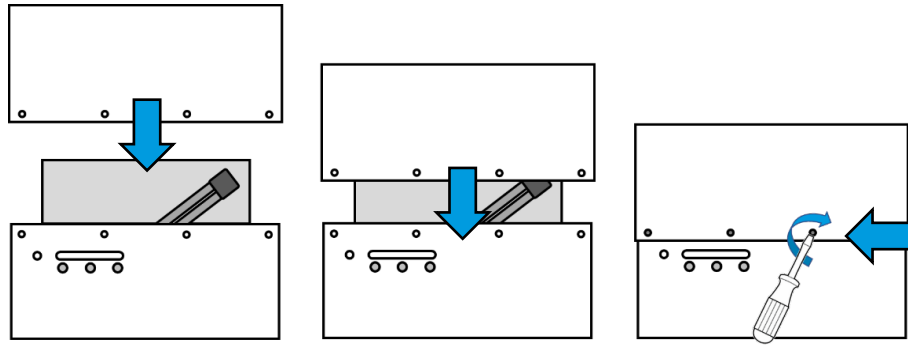
Series M: UVC Mobile Air Purifier

Operating Instructions



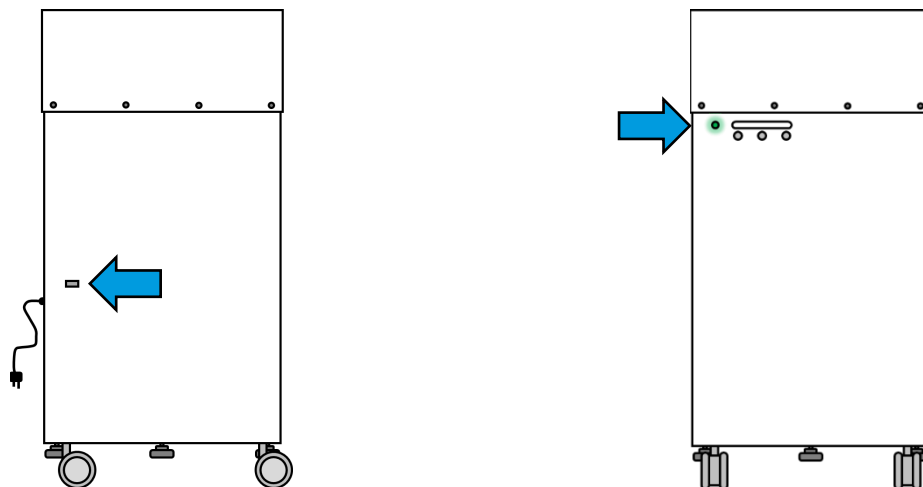
D. Close and secure the lid.

1. Lower the lid back over the unit, lining up the holes.
2. Use the flathead screwdriver to secure the lid to the body with the 16 screws previously removed (4 per side).



E. Connect the power cord and turn the purifier on.

1. Locate the female end of the power cord and insert it into the receiver on the back of the purifier.
2. Unspool the cord and plug the male end into a wall socket.
3. The purifier requires 11 Amps when on High. Safeology recommends one purifier per circuit to prevent tripping.
4. Turn the power on by using the master power switch located on the side of the tower. This will not activate the fan, nor the UVC lamps.
5. The power indicator light to the left of the fan control will turn on when the purifier is ready for use. If the purifier is enabled with WiFi, the power light will flash until a WiFi connection is established.



F. Adjust the fan speed as desired.

1. Using the fan speed controls on the front of the purifier, select the desired air circulation.
 - a. Low – select the left button.
 - b. Medium – select the center button.
 - c. High – select the right button.
 - d. Turbo – push and hold the right button.
2. The indicator will light up progressively as the fan speed gets higher.
3. To turn off, hold the left button for 2 seconds.



IV. CHANGING THE FILTERS

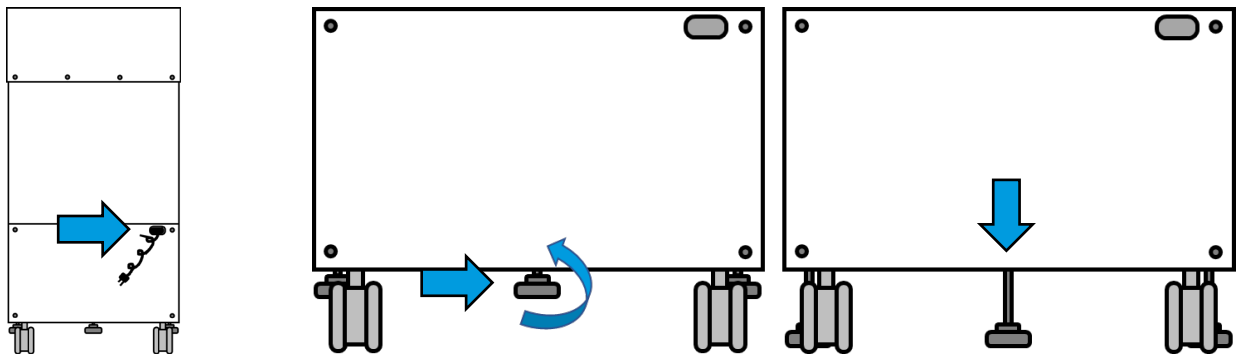
See section V “Care and Cleaning” for the recommended filter life.

A. Turn the power off.

1. Turn the master power switch to off.
2. Unplug the power cord from the wall.
3. Check the power indicator lights to reconfirm there is no power to the purifier (no lights should be visible).

B. Remove the power cord and release the knobs.

1. Remove the power cord from the purifier at the back.
2. Release the knobs holding the filters to the fan mount. Repeat on all four sides.
3. Knobs not unscrewed far enough may impede the drawer. Loosen until the drawer is sitting on the rails.



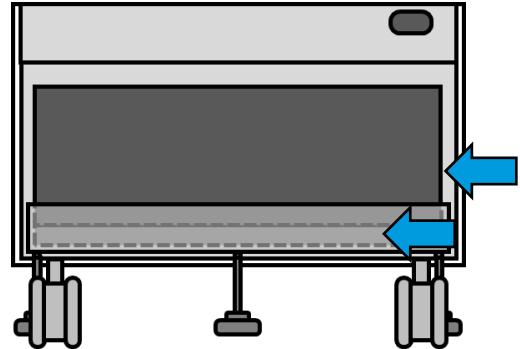
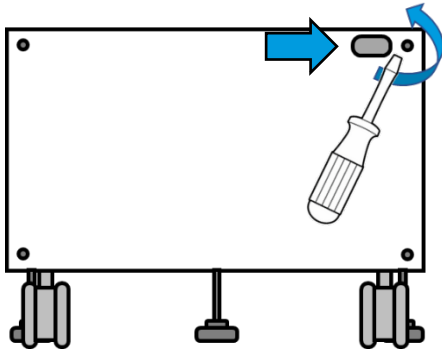
Series M: UVC Mobile Air Purifier

Operating Instructions



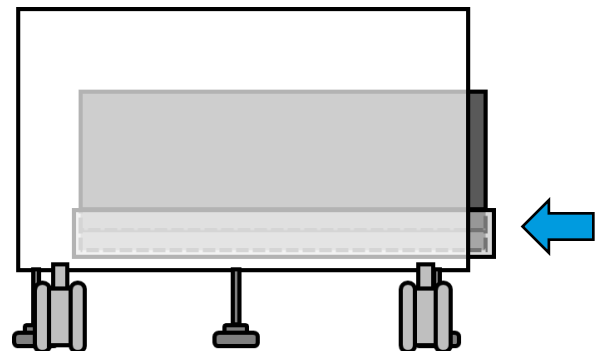
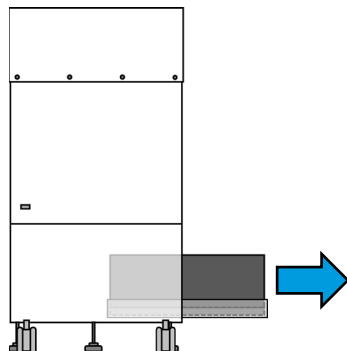
C. Remove the back panel.

1. Using a screwdriver, remove the 4 screws holding the panel in place on the back of the unit.
2. Remove the panel exposing the drawer.
 - a. The carbon/prefilter is at the bottom of the drawer.
 - b. The HEPA filter sits directly on top of the carbon/prefilter but extends beyond the top of the drawer.



D. Replace the filters.

1. Be sure to wear proper PPE such as dust mask, gloves, and goggles.
2. Pull the drawer out far enough to remove the filters. If the drawer is stuck, see step IV-B-3.
3. If replacing the carbon/prefilter only:
 - a. Gently set the HEPA filter aside.
 - b. Place the new carbon/prefilter in the bottom of the drawer, ensuring the airflow direction arrow is pointing up.
 - c. Replace the HEPA filter, ensuring the airflow direction arrow is pointing up.
 - d. The old carbon/prefilter can be placed straight in a trash bin. Do not recycle it.
4. If replacing the HEPA filter and carbon/prefilter:
 - a. Remove the HEPA filter, place it in a bag and place the bag in the trash.
 - b. Place a new carbon filter in the drawer, ensuring the airflow direction arrow is pointing up.
 - c. Place the new HEPA filter on top, ensuring the airflow direction arrow is pointing up.
5. Push the drawer back into the purifier.



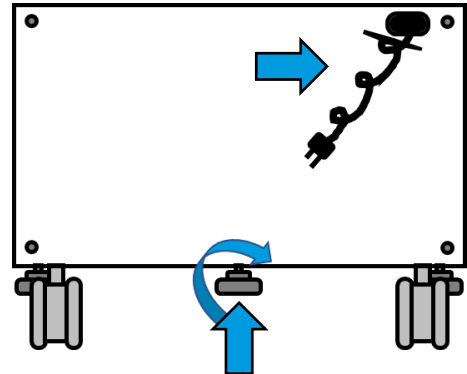
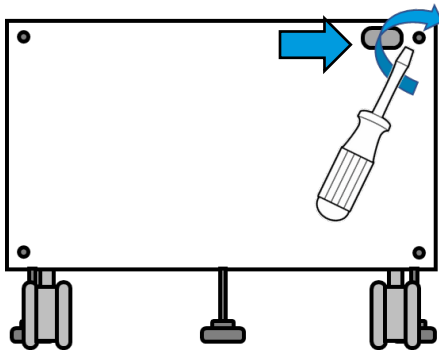
Series M: UVC Mobile Air Purifier

Operating Instructions



E. Reattach the back panel and secure the knobs.

1. Replace the access panel on the back of the purifier.
2. Using a screwdriver, replace the 4 screws to secure the access panel.
3. Screw the knobs back into place.
 - a. These knobs push the filters against the fan to create the seal.
 - b. Be sure these are screwed down tight – do not stop at the first encounter of resistance.
 - c. You may need to work around the purifier several times to make sure the fit is tight.
4. Reattach the power cord.



V. CARE AND CLEANING INSTRUCTIONS

Failure to follow the instructions below will void the warranty.

A. Clean the outside of the purifier as needed.

1. Use soft, grit-free and lint-free cloths to reduce the chance of scratching the surface.
2. Never spray water or cleaner directly onto the purifier. Instead, apply it directly to the cloth, then wipe.
3. Ensure everything is thoroughly dry.

B. Clean and replace the lamps according to schedule.

1. Lamps should be cleaned every three months.
 - a. Apply alcohol to a rag and wipe down the lamp.
 - b. Do not use water.
2. Lamps should be replaced every year or 9,000 hours of operation, whichever occurs first.
 - a. Lamp must match specification listed on label in housing.
 - b. See above for installation instructions.

C. Replace the filters according to schedule.

1. HEPA filters should be replaced every year, or 2,600 hours of operation, whichever occurs first.
 - a. Replacement cycles may vary based on usage and environmental factors.
2. Carbon/Prefilters should be replaced every three months, or 650 hours of operation, whichever occurs first.
 - a. Replacement cycles may vary based on usage and environmental factors.
3. Wear PPE as needed (gloves, masks, etc.) when replacing.
4. Filters are not cleanable, dispose and replace as directed in IV-D above.